

Happy Holidays and welcome to the latest TwelveTrees Park Community Newsletter from Berkeley Homes.



Find out the latest updates on the TwelveTrees project.

Dear Neighbours,

We hope you are keeping safe and well in the lead-up to the Christmas break. We wanted to let you know that we have been busy working hard behind the scenes on the TwelveTrees project since we last got in touch with you, and are continuing to work collaboratively with the local community. We are excited to share some exciting updates with you on our work within the community and on site ahead of the New Year.

In order to spread some festive cheer in the borough, we have been working hard to deliver our 'TwelveTrees for Christmas' campaign within the community. This included the donation of several festive trees to local community groups and organisations, supporting local businesses and strengthening our youth engagement programme with local schools and colleges in the run up to the festive break. We have also begun preliminary work on site on the two pedestrian bridges and new station entrance that will greatly improve accessibility to the site for local people. This has included piling works and road works.

2022 promises to be another busy year, with the team kicking off a competition to find a local artist to help work on the design of the new community centre that will be delivered as part of the project. We are also preparing for Phase 2 of the project which we anticipate taking place in spring next year.

More information about all of this exciting work can be found within this newsletter and we'll continue to keep you up to date. In the meantime we wish you all happy holidays and an amazing New Year. We hope to meet as many of you as possible in person in 2022!



Bernhard Elber
Development Director

Twelve Trees for Christmas

Berkeley Homes has been collaborating with local schools and businesses over the course of December to offer support and spread holiday cheer with local people. See below for some of the fun things we've been up to!



Our donated tree at RIAL Café.



Pupils at Gainsborough Primary School enjoying their donated Christmas tree.

Tree donations

We have donated trees to the following local businesses to help spread Christmas cheer.

- **RIAL Café**
- **Gainsborough Primary School**
- **Custom House Bookshop**
- **Rosetta Arts**

We also donated a Christmas tree to Ambition Aspire Achieve (AAA), who have kindly regifted their tree to a local family within the borough.

Try a Trades Day

On Thursday 2 December, Berkeley staff visited Cleves Primary School. We set up a stall and visited classrooms to show them some aspects of what we do, such as what happens when we start building on site and what that can mean for the local area.

We hope this inspired some of the young children that we engaged with on site and hope to see them working in the local area in the years to come!

Young Futures Foundation Programme

Berkeley Homes staff were invited to volunteer their time to mentor students from Kingsford Secondary School.

The programme will support 90 local young people by providing support and guidance alongside a variety of other intervention programmes to ensure they successfully complete their final years of secondary school.

On Thursday 9 December, staff met students virtually to kick off the initiative.

Kevin Jenkins OBE Toy Appeal

Berkeley Homes has been working with the Kevin Jenkins OBE Newham Christmas Toy Appeal as our Christmas charity of the year. Jenkins was the founder of AAA and the Toy Appeal is being done in his memory this year. Berkeley Homes has shown its support to this amazing appeal by donating stockings and presents to some of the most vulnerable families and young people in Newham. Boxes and donations have been set up in Berkeley's offices and staff have been making generous donations, which is needed now more than ever given the challenges of the last eighteen months.

We hope that this will bring joy to those who need it this festive break.

Visit to AAA's Abbey Hub

Berkeley Homes visited AAA's Abbey Hub on Wednesday 1 December to view their donated plot of land which they want to redevelop. The land is located next to the Abbey Hub and will be used to give local children the opportunity to engage with nature. Plans are at an early stage and we look forward to updating you more about this project in the New Year. Six laptops were also donated this month to the Hub, to support local people and make sure they can access the services they need to.



Our donated toys and items to be delivered to young people across Newham.

Local artists wanted for Community Centre glass panel design

One of the main deliverables of Phase 1 of the exciting TwelveTrees Park development is a community centre, which will be run in collaboration with the local community. And since we know that art is a key form of expression for so many in East London, Berkeley Homes together with Rosetta Arts Centre are holding a competition for a resident artist to design an art piece for the glass panels on the frontage of the centre.

Together with members of the local community, including your elected councillors and Sanaz Amidi, the CEO and Founder of the **Rosetta Centre**, we are shortlisting the most promising designs in the coming weeks, and look forward to sharing updates next year.



Development updates

Work updates on site

Works to construct the new bridges that will connect the site to the wider community are progressing well.


In order to facilitate these works we will need to put some road and parking suspensions in place to maintain the safety of pedestrians and manage traffic in the area.


A summary of the works that have taken place, and coming in the early New Year, includes:

- **The traffic management and lane closure outside West Ham Station will be reinstated, and Bus Stop P, will be suspended on 4 January.**
- **Temporary pit lane on Manor Road will be removed, and Bus Stop N (35701) will be reinstated on 23 December.**
- **Completing piling works on the western sides for the two pedestrian bridges and new station entrance**
- **Commencing piling works to the eastern side of the footbridge, which is due to finish before the new year.**
- **The lifting of both pedestrian bridges will take place late-Spring next year.**
- **Piling beside West Ham station to take place in January 2022.**

Phase 2 Consultation

Consultation in the New Year

 With Phase 1 of the TwelveTrees Park development now well underway, we're starting to think about what's next on site and how we can consolidate our plans for Phase 2. Early in the New Year, we will be looking to launch a consultation on our Reserved Matters application which will follow on from our granted outline planning permission, before submitting an application to Newham Council sometime in the spring.

 We will make sure to let you know of further updates in upcoming newsletters and leaflets to make sure you're well informed on the progress of the project, and any events taking place in the community so that we can see you in person (guidelines permitting) and have your questions answered.





A CGI of the West Ham station entrance


Get in touch

We have updated our community website to include a section that contains all of the latest construction information in order to keep you updated. If you have any further questions or queries regarding construction, please get in touch with Bernhard Elber (Development Director), Mari Chisholm (Community Engagement Manager) or Lisa Clements (Development Manager) at Berkeley Homes who are leading the development of TwelveTrees Park.

You can get in touch with them using the following details:

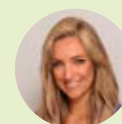
 StephensonStreet@berkeleygroup.co.uk

 020 7601 7300

 www.berkeley-stephensonstreet.co.uk



Mari Chisholm
Community
Engagement Manager



Lisa Clements
Development Manager