

TwelveTrees Park Community Update Newsletter



View of how open spaces in TwelveTrees Park could look on completion

Dear Neighbours,

Welcome to this edition of our community update newsletter on the TwelveTrees Park project.

You may have seen some of the works taking place on site recently and we are pleased to see the progress being made on Phase 1. In June we were delighted to install the first pedestrian bridge to the site, which represents a major milestone for TwelveTrees Park.

We have also enjoyed working with local schools and organisations in the lead up to the summer holidays. We will also be hosting the first in a series of resident meetings to talk to you. More details on how to get involved, as well as how to have your say on the new community space, can be seen on the back page.

Earlier this year, we also held our public consultation activities for Phase 2 of the development, and we would like to thank everyone who talked to us.

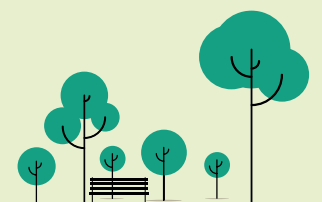
We have been taking all this feedback onboard and are in the process of finalising the application, and are looking to submit shortly.

We hope you find this newsletter useful. Thank you for your continued engagement with us and we hope you have enjoyed the summer break.



Bernhard Elber

TwelveTrees Park Development Director



Phase 1 – Construction updates

We have been busy with a range of construction works on site. The first pedestrian bridge was successfully lifted on 20 June 2022. This first bridge, measuring 60 metres, represents a major milestone for the TwelveTrees Park development and will provide direct access from the platform into the development, linking the site to the wider community for the first time ever. We have also been busy with:



Structural works of two pedestrian bridges which commenced in early July.



We have a very busy upcoming period which will see building works start to the façade for some of the buildings in Phase 1a, as well as internal works.



Establishing a pedestrian crossing on Milner Road to facilitate safe crossing of the road.



Two additional tower cranes for the N01 plot are going to be installed by October.



Works on the Stephenson Street Bridge which began in early June.



Phase 1b is due to kick off in November, with piling works being undertaken in to the New Year.



Works on the Southern footbridge are currently underway, along with the northern pedestrian bridge.



From November, mains services will be connected to the western and southern areas of the site.



Off site fabrication of pre-cast concrete elements for pedestrian bridges, which will be installed in September and is due to be completed later this autumn.

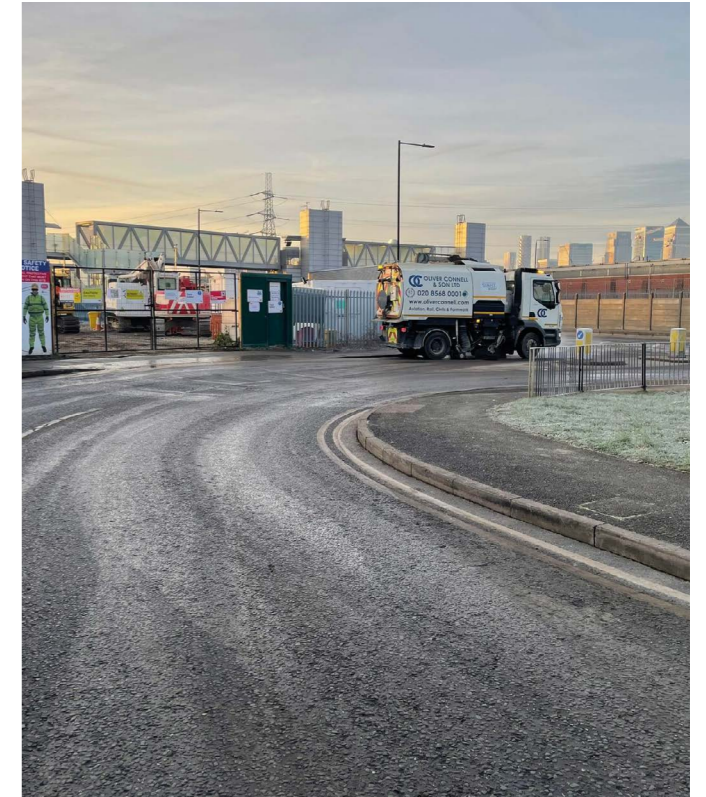
Should you have any questions for the team please get in touch by emailing stephensonstreet@berkeleygroup.co.uk or visit the website at www.berkeley-stephensonstreet.co.uk.

Traffic management

Overnight works will be taking place during the week until 13 November 2022. These will take place next to or over the railway lines. As a result of these works, there will be lane closures on Manor Road and Milner Road from **7pm to 11pm Monday to Friday and Sunday daytimes**, with diversions in place. These works unfortunately cannot take place during normal site hours, due to strict health and safety requirements. Deliveries will also be planned outside of peak hours where possible to reduce congestion and delays. We will continue to keep you informed of any updates as they take place.

Managing impacts

It has been one of the dustiest summers on record. We will continue to put mitigation measures in place, as agreed with Newham Council, to reduce the spreading of dust in the environment. This includes using dust suppression techniques such as dampening down and regular road cleaning operations. As proud members of the Considerate Constructors Scheme, we want to make sure the local community is kept safe and tidy during our construction process.



Carrying out dust suppression techniques

We appreciate your continued patience. Should you have any queries please feel free to get in touch with our team using the contact details on the back page, and don't forget to sign up for updates.

Phase 2 – Consultation updates

Following our public consultation events earlier this year, we have been continuing to talk to members of the community and a variety of stakeholders to hear their thoughts on our proposals for Phase 2. We have incorporated the feedback into our plans where appropriate and are now preparing to submit our Reserved Matters application to Newham Council.

Thank you for all the feedback you've submitted and for keeping engaged on the project. We will let you know when the application is submitted, which should be within the next four weeks, and details of how you can share any further comments with the Council.



Image of the newly installed station entrance bridge



Pedestrian crossing installed on Milner Road



Image from our Phase 2 consultation event earlier this year



View of how open spaces in TwelveTrees Park could look on completion

What we've been up to in the community

There have been plenty of local events and initiatives that we've been involved in. See below for some highlights of what we've been up to with the local community over the past few months.

An update on our street naming competition

We have been running a street naming competition with the Gainsborough Primary School, with assistance from the Custom House Bookshop. We'd like to take this opportunity to thank all students and their families for getting involved. These new streets will be delivered as part of the wider masterplan and we look forward to unveiling the winning names in the near future.

Get involved in the future of the Phase 1 new community spaces

We are creating new community space in Phase 1 and are looking at setting up a group that can share ideas for what these spaces are used for and how they are run. This group will be a platform for local people to discuss ideas on how these spaces can best be used to benefit the local community. This could be through health services, education, dance classes and more – it really is up to you!

If you're interested in joining this group please email us at: stephensonstreet@berkeleygroup.co.uk



Some of the artwork produced alongside Ian Kirkpatrick

Join us at our upcoming residents drop-in!

We will be holding our first drop-in residents' meeting on 18 October from 4pm to 7pm on site and would love for you to join us.

This will be your chance to chat to us about any questions you may have about TwelveTrees Park, such as the Phase 1 works, the application for Phase 2 or the wider masterplan. Refreshments will be available for you to enjoy as well.

We will be organising a mini bus from outside of Selco on Stephenson Street to bring you to the meeting – if you'd like to book a space please email us using the details below.

We look forward to seeing you then!



Get in touch

If you have any queries about our proposals or on the construction works taking place, you can get in touch with the team or sign up to our mailing list using the following details:

✉ StephensonStreet@berkeleygroup.co.uk

☎ 020 4509 0301

🖱 www.berkeley-stephensonstreet.co.uk



Mari Chisholm
Community
Engagement Manager



Bernhard Elber
TwelveTrees Park
Development Director