

# TwelveTrees Park Community Update Newsletter, Christmas 2022

## Dear Neighbours,

We hope you are keeping safe and well. Ahead of the festive break, we wanted to let you know that the applications for Phase 2 have now been validated by Newham Council. You can now revisit details of the proposals and share your comments directly to the Council.

We also have a number of other construction updates to share with you, as well as details of our next resident drop-in event.

In the meantime, we wish you all happy holidays and we look forward to talking to you again in the new year!



**Bernhard Elber**  
TwelveTrees Park Development Director

## Phase 2 planning applications validated

The Reserved Matters Application and Section 73 application for Phase 2 of the TwelveTrees Park masterplan have now been validated by Newham Council.

You can see details of these and provide the Council with any comments by visiting the portal and entering one of the following reference numbers:

- **22/02554/REM – Reserved Matters Application**
- **22/02523/VAR – Section 73 application**

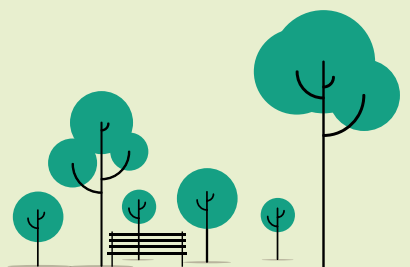
You can view the planning portal and provide comments at [pa.newham.gov.uk/online-applications](https://pa.newham.gov.uk/online-applications)



View looking onto TwelveTrees Park



Scan here  
to visit  
the portal



# Construction updates

We have been busy with a number of construction works over the autumn and winter which continue to progress well. There are also a number of other upcoming milestones for the new year:



Structural works for the two pedestrian bridges have now been completed.



Site-wide drainage and road construction works are well underway across the site.



The traffic management plan along Milner Road is now in place and being maintained to facilitate safe crossings while works take place.



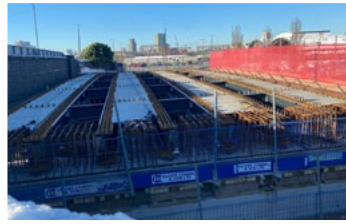
Building works to the façade for some of the buildings in Phase 1a, as well as internal works, are now well underway.



Two tower cranes for the N01 plot have been successfully installed.



Works for Phase 1b are now underway, with piling works currently scheduled to take place in the new year.



View of the newly installed station entrance bridge

## Come to our next resident drop-in session on 21 February!

It was great to see so many of you at our first drop-in meeting on site in October. Our next drop-in will be taking place on **Tuesday 21 February, 5pm - 7pm** where you can talk to us more about the project and the works taking place.

Save the date in your diary and watch this space for more details nearer the time.

We look forward to seeing you there!

## Christmas closures

Construction works on site will stop on TwelveTrees Park from **23 December - 2 January**.

If you see an emergency on site during these times please call **Sam Laws on 07811 065917** or **Dean Jones on 07880 474216**.

## Get in touch

Let us know if you have any queries about our proposals or on the construction works taking place, or sign up to our mailing list:

 [StephensonStreet@berkeleygroup.co.uk](mailto:StephensonStreet@berkeleygroup.co.uk)

 020 4509 0301

 [www.berkeley-stephensonstreet.co.uk](http://www.berkeley-stephensonstreet.co.uk)



**Mari Chisholm**  
Community  
Engagement Manager



**Bernhard Elber**  
TwelveTrees Park  
Development Director